



# Design your world in a card

**cardfive** professional card design software

**CardFive** is a multifunctional application that offers easy and flexible features to manage any card design and printing needs. From the backoffice card production to the low-end personalization, CardFive is able to provide easy to use solutions with total control of your choices.

#### Applications:

- Create cards for Loyalty programs
- Membership ID's
- Access control
- Visitor badges
- Access cards
- Promotions
- Driver licenses
- Clubs and associations
- Retails stores
- Prisons facilities
- Schools and libraries
- Sports markets
- ...and any other use that requires identification.

#### Total integration environment

Very easy to setup and use, CardFive presents all the features needed to handle cards with a total environment integration. Design, manage database and printing jobs in the same integrated window with total versatility.

#### Database connections and features

From the CSV database connection to the advanced ODBC connection, each CardFive edition offers more variety of database solutions, to support any card production type by adapting database needs for no limitation at the card production.

#### Printing speed and maximum error control

Use any printer through Windows drivers or use CardFive DCL (Direct Command Language) for more printing speed and error control. CardFive includes more than 100 DCL's (internal drivers) for the most popular card printers in the market.

#### Fast upgrades and easy stock management

Upgrade CardFive editions using the unique RLL technology (Remote License Loader) to provide immediate upgrades by email.

#### Multi professional resources

With CardFive it is possible to use a variety of professional resources at the higher level of card production with the simplicity of the most user friendly solutions. Encode magnetic stripe, connect to any smartcard application to encode at print time, encode contactless cards, manage biometric devices to print or encode data from fingerprints, manage overlay types, barcode printing, variable objects of database or systems, sources and much more.

#### Powerful imaging and design features

Integrate any picture format using DirectShow or Twain, use images from database or file and apply all the powerful imaging features available such as transparency, brightness, cut-out color. CardFive also includes a variety of tools to create your own design shapes such as lines, rotations and alignments, all necessary tools to create your card design in a simple and fast way.

#### DCL's & Windows driver printing

Print via DCL (Direct Command Language) or via Windows driver

#### Encoding

Encode magnetic, Contact & Contactless Smart Cards

#### Database Connectivity

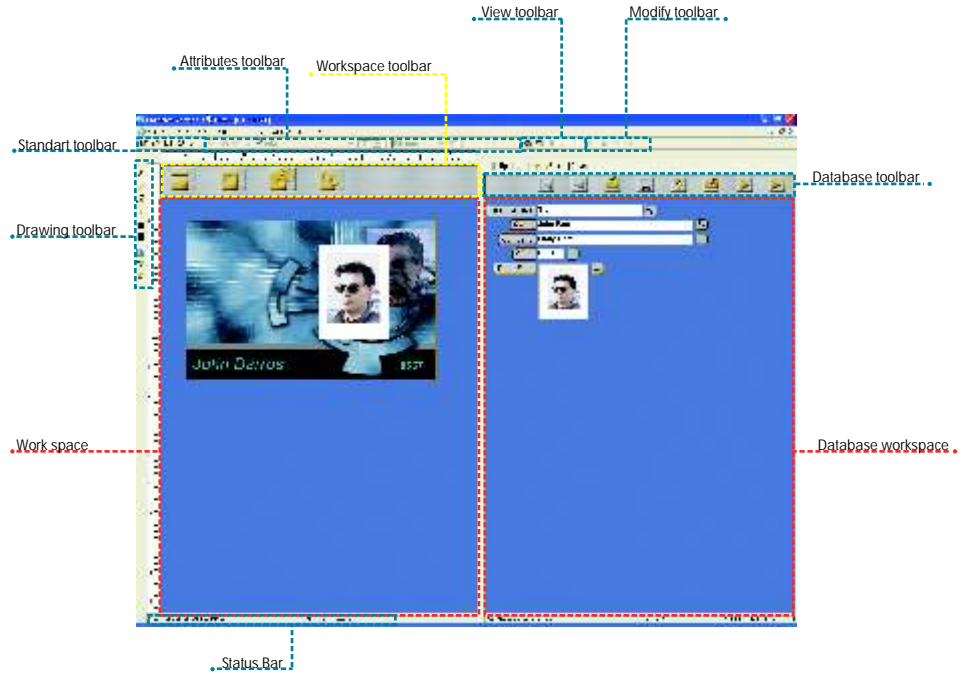
Use ODBC drivers for maximum connectivity

#### Biometrics

Capture fingerprint to print, save on database or encode on Contactless cards



# CardFive intuitive interface- WYSIWYG



## Standard Features

- Setup Programs on CD, with Multi-language installation version in English, French, German, Portuguese, Italian and Spanish
- KeyFive Protection (SmartCard) - with serial or USB interface (default)
- Manual - available in digital format and printed in one selected language
- Free Updates - Updates available FREE of charge at [www.nfive.com](http://www.nfive.com)
- WYSIWYG Multi Document Interface - No need to preview operation
- Barcodes & PDF 417 2D - Major barcodes styles, rotate, align, check digits, human readable and transparent background - Encode photos in PDF 417 two-dimensional barcode
- Variable Objects - System sources
- Import Image from File - BMP, TIF, TGA, PCX, JPG, WMF or from Clipart gallery picture
- Windows & Private Clipboard - Open or paste items from CardFive or Windows Clipboard
- Build-in Image Tools - Adjust and control image properties
- Twain image acquisition interface - Scanner, digital camera or any Twain device to acquire photos
- Front & Back Printing Management - Design and print on both sides of the card
- DCL's & Windows Driver Printing - Direct Command Language to major printers on the market. Get maximum speed and error control or print to any printer by Windows Driver
- Overlay Management - Print bitmap as overlay or select type of overlay (Full, Selectable area, bitmap, etc...)
- Batch Printing - Pre-print, revise, select, print overlay management
- Magnetic Encoding - Encode track 1, 2 and 3 directly or via Windows driver.
- Contact Smart Card Encoding - Use any smartcard application to encode at print time

## Face Snap (Added to all editions by RLL technology)

Optional plug-in for professional photo badge production. Automatically identifies faces within a scenario, cropping them with 10% of surrounding area, and optimizing all images for total consistency of the production work.

For more information contact our sales department:



Portugal (HO)  
Phone: +351 261 860 450  
Fax: +351 261 865 647  
E-Mail: [Sales@nfive.com](mailto:Sales@nfive.com)

USA  
Phone: +1 805 522 99 06  
Fax: +1 805 577 96 72  
E-Mail: [info.usa@nfive.com](mailto:info.usa@nfive.com)

Italy  
Phone: +39 051 617 8229  
Fax: +39 051 618 3541  
E-Mail: [info.it@nfive.com](mailto:info.it@nfive.com)

Singapore  
Phone: +65 6238 1378  
Fax: +65 6238 0768  
E-Mail: [info.sg@nfive.com](mailto:info.sg@nfive.com)

[www.nfive.com](http://www.nfive.com)

|   | Classic | Lite Plus | Premier | Professional | Elite |
|---|---------|-----------|---------|--------------|-------|
| <b>Editions (Upgrades available by RLL technology)</b>  |         |           |         |              |       |
| <b>Tools &amp; Imaging</b>  |         |           |         |              |       |
| Variable Objects - Database Sources   |         | ✓         | ✓       | ✓            | ✓     |
| Video for windows image acquisition interface - Real Time Video on card                           |         |           |         | ✓            | ✓     |
| Logins - Separate access rights for each user: design, edit data, print setup                     |         |           |         | ✓            | ✓     |
| <b>Printing</b>   |         |           |         |              |       |
| Autoprint - Automatically print cards by adding records   |         |           |         |              | ✓     |
| <b>Database</b>   |         |           |         |              |       |
| CSV Database Connection - Connect to comma separate value files                                   |         | ✓         | ✓       | ✓            | ✓     |
| Internal Database - Create database without needing any external application                      |         |           | ✓       | ✓            | ✓     |
| OLE Objects & Photo on a Database Record - Add photos to database records                         |         |           | ✓       | ✓            | ✓     |
| Database Query - Using query select a desired set of records                                      |         |           | ✓       | ✓            | ✓     |
| Database Create/Edit - Add and manage tables from database  |         |           | ✓       | ✓            | ✓     |
| External Database (ODBC) - Create, save and print a list of records including photos              |         |           |         | ✓            | ✓     |
| Database Create/Edit - Maximum connectivity with ODBC (Access, Paradox, FoxPro, Excel, text, SQL) |         |           |         | ✓            | ✓     |
| <b>Encoding</b>   |         |           |         |              |       |
| Contactless Smart Card Encoding - Encode Mifare and HID cards directly or using external device   |         |           |         |              | ✓     |
| <b>Biometrics</b>   |         |           |         |              |       |
| Biometrics Devices Supported - V-Smart & V-Pass from Bioscrypt                                    |         |           |         |              | ✓     |
| <b>Miscellaneous</b>  |         |           |         |              |       |
| Net Licenses - Edition to run with Master license on same (LAN) network                           |         |           | ✓       | ✓            | ✓     |